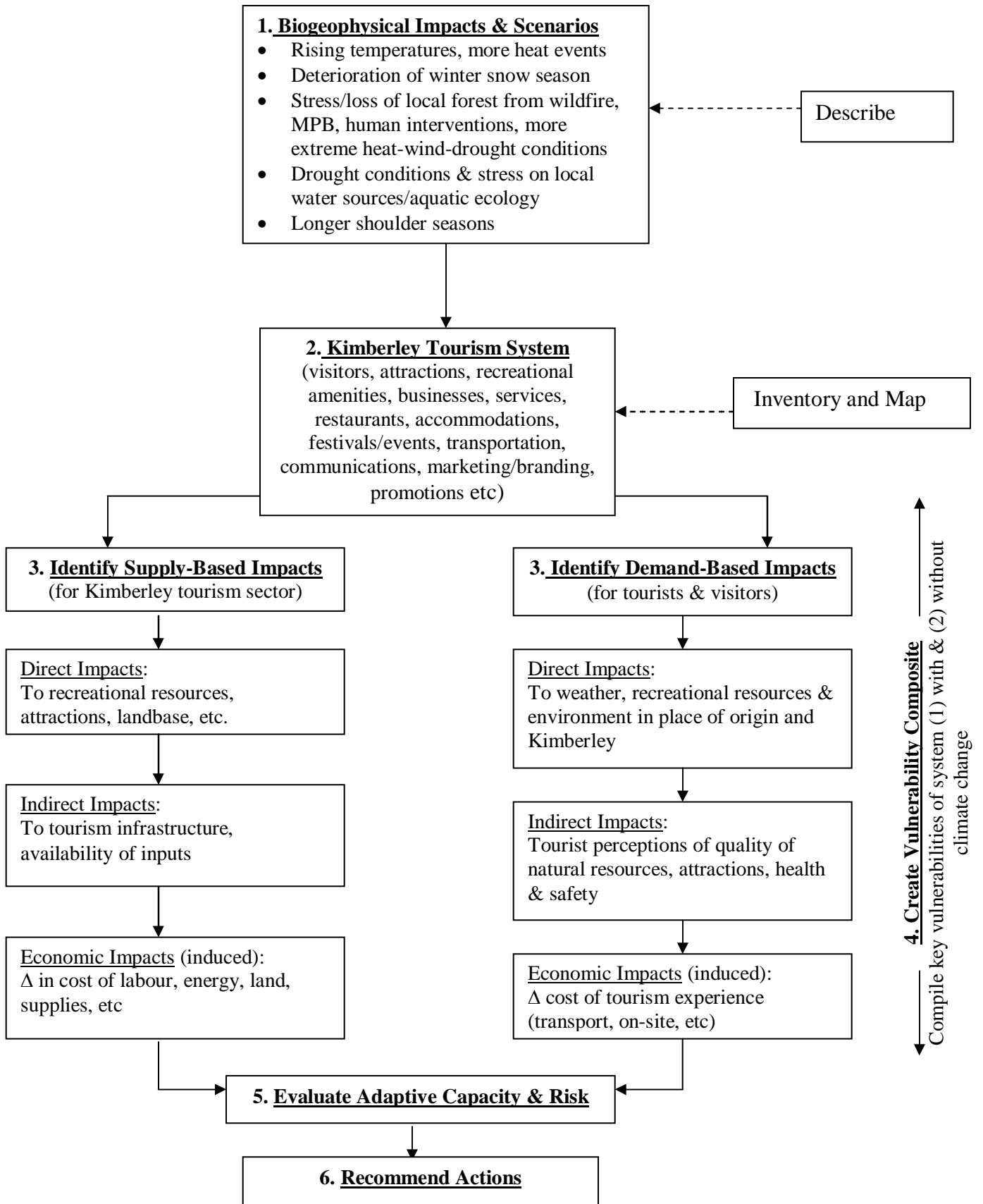


Kimberley Conceptual Framework for Tourism Vulnerability Assessment



Tourism

Kimberley Impacts & Opportunities

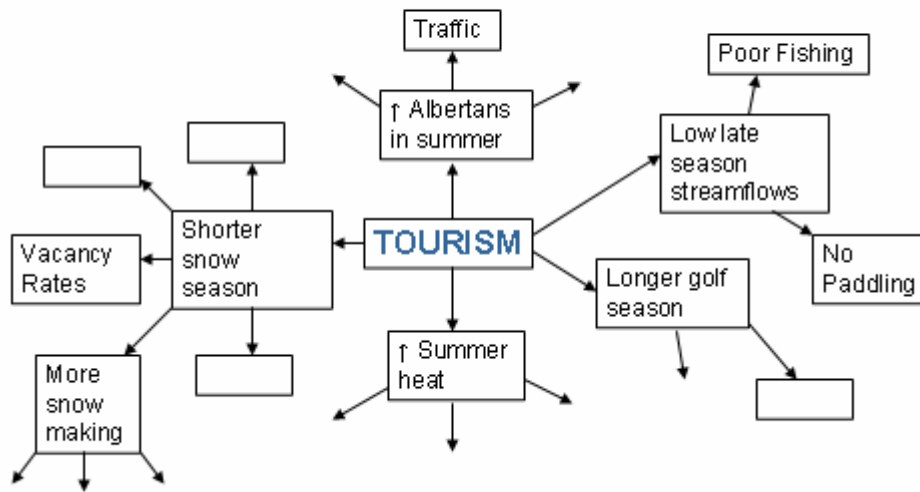


Table 23: Key Tourism Vulnerabilities and Objectives

Vulnerability	Objective
Ski Tourism	To maintain a viable commercial ski hill operation for as long as possible without compromising municipal water supply and related water values.
Golf Tourism	To maintain three commercially viable golf courses in Kimberley for as long as possible without compromising municipal water supply and related water values.
Trail-Based Tourism	To enhance, protect and more effectively promote Kimberley's trail systems as a valuable recreational and eco-tourism asset in a changing climate.
Water-Based Tourism	Enhance awareness of our precious local rivers and lakes and help ensure appropriate land/resource use management decisions to manage and protect them in a changing climate
Festival & Event Based Tourism	Maximize opportunities for festivals afforded by a changing climate while ensuring health and safety of visitors
Other Local Attractions	Preserve character of local tourist attractions and general mountain town feel in a changing climate

For more information:

Columbia Basin Trust Communities Adapting to Climate Change Resource Kit

Tourism assessment references - <http://cbtadaptation.squarespace.com/useful-material-4/>

Adapting to Climate Change in Kimberley, BC Report & Recommendations. 2009. Ingrid Liepa.

<http://cbtadaptation.squarespace.com/kimberley-bc/>