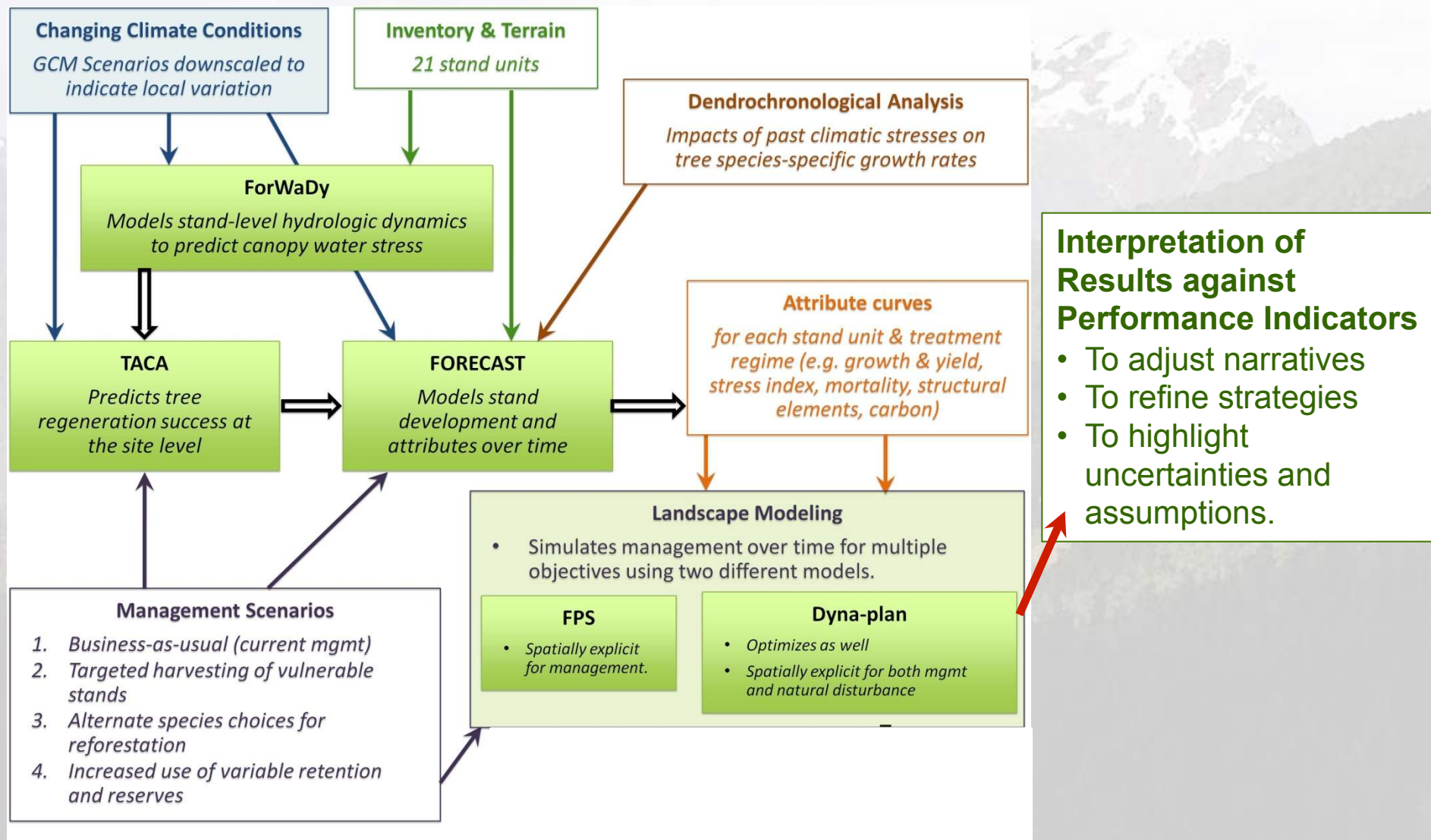


Overview of completed work: Modeling Suite and Approach



Overview of completed work:

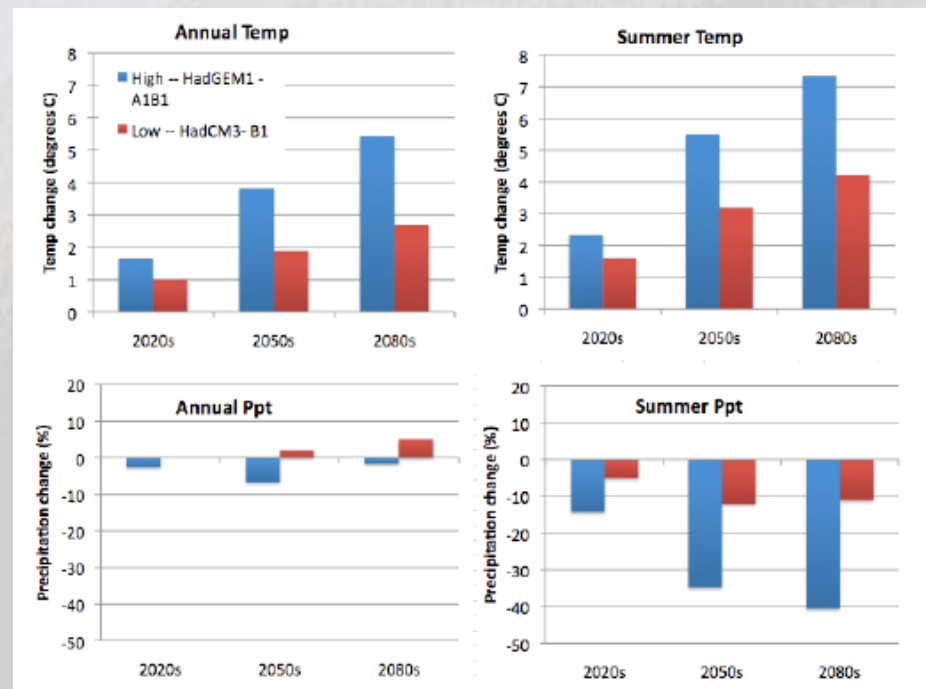
Climate Scenarios and Data



TWO GLOBAL CIRCULATION MODELING SCENARIOS CHOSEN AS BOOKENDS:

- From a short list created by PCIC and the MoF
- HIGH CHANGE – HadGEM1 model with A1B1 emissions scenario.
- LOW CHANGE – HadCM3 model with B1-Run1 emissions scenario.

Provide mean monthly precipitation and temperature data



Overview of completed work:

Climate Scenarios and Data

GCM MEAN MONTHLY DATA WAS DOWNSCALED

- With data from local climate stations located in the various ecogroups



To reflect:

1. Local geographic variation - elevation, latitude and aspect
2. Local inter-annual variability in climate.

And allow for:

1. Daily time steps for the:
 - Tree species model (TACA).
 - And the FORCAST-FORWADY combo – over 100 years.

